

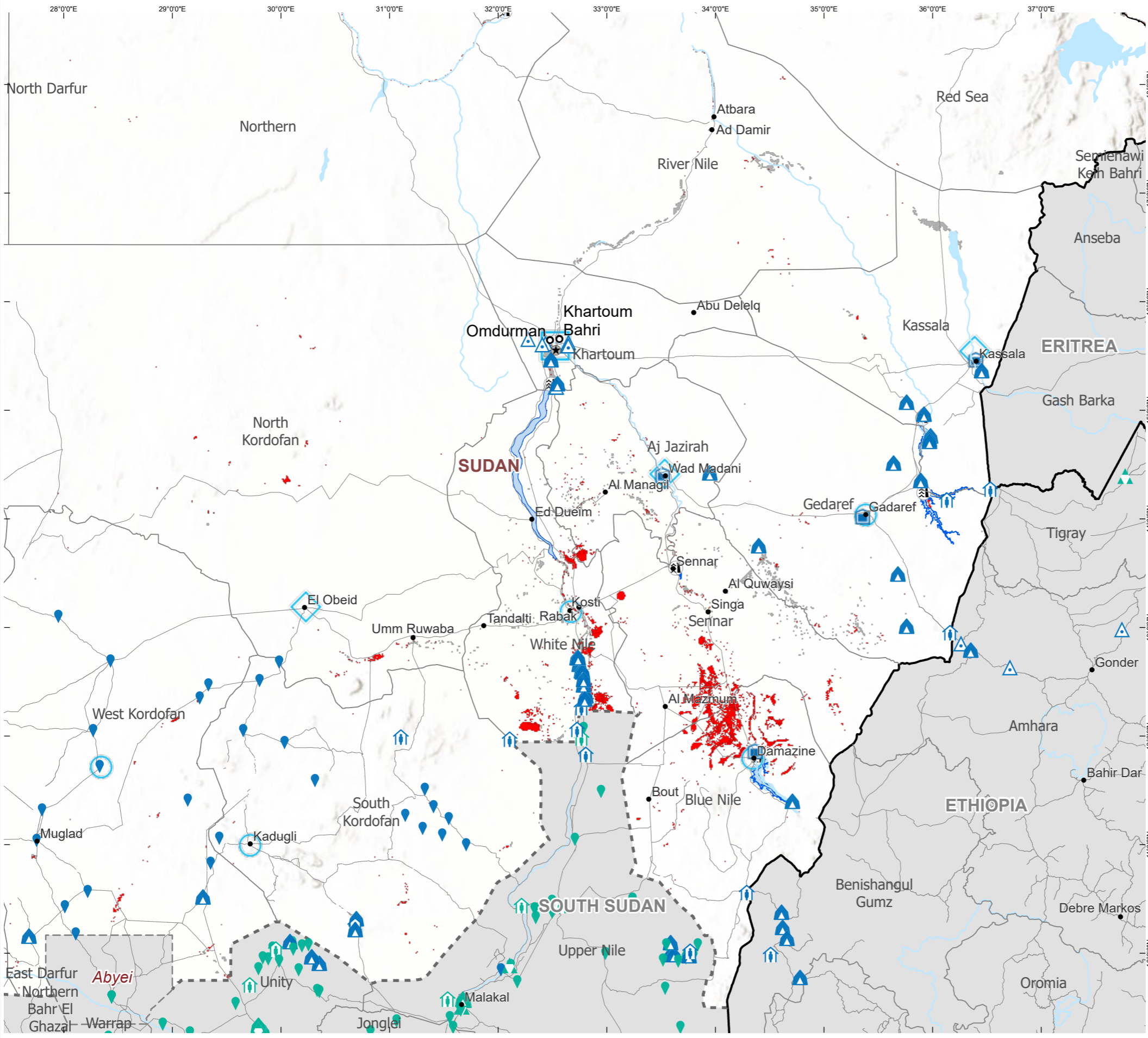
# ADAM

Advanced Disaster Analysis & Mapping

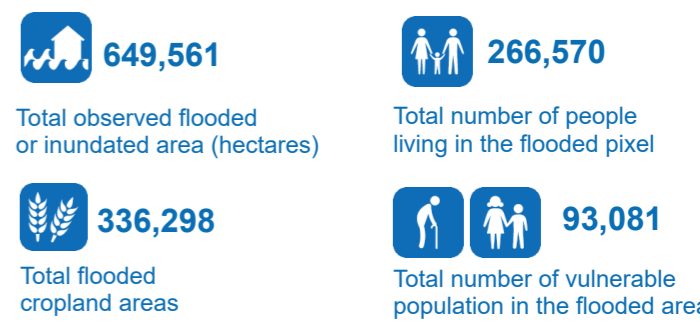
## Flood Impact Analysis Sudan

19 August 2024

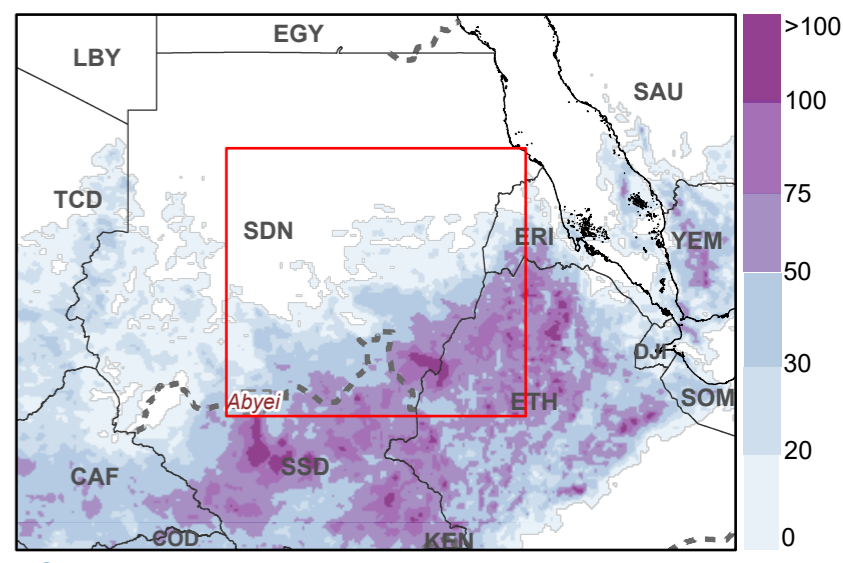




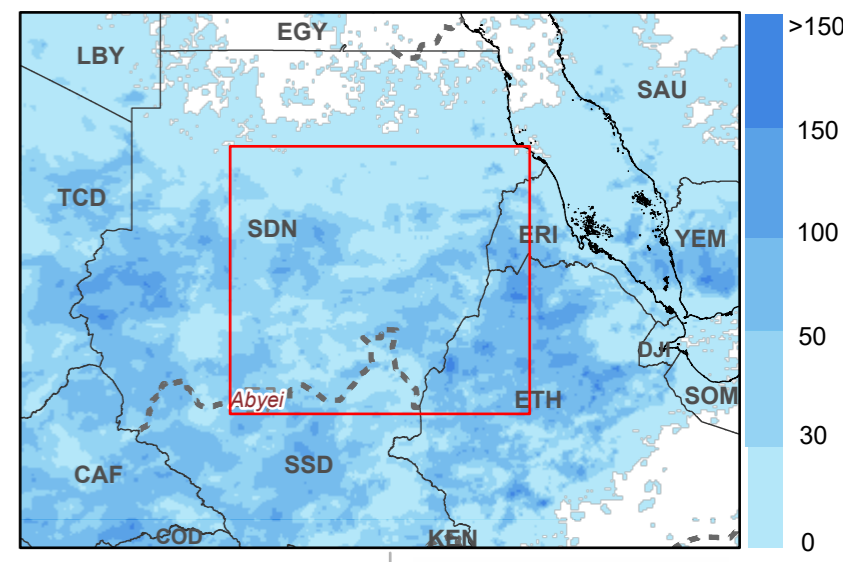
### Rapid Flood Impact Summary



### Next 5-days rainfall forecast



### Past 7-days rainfall accumulation



Automatically generated report powered by

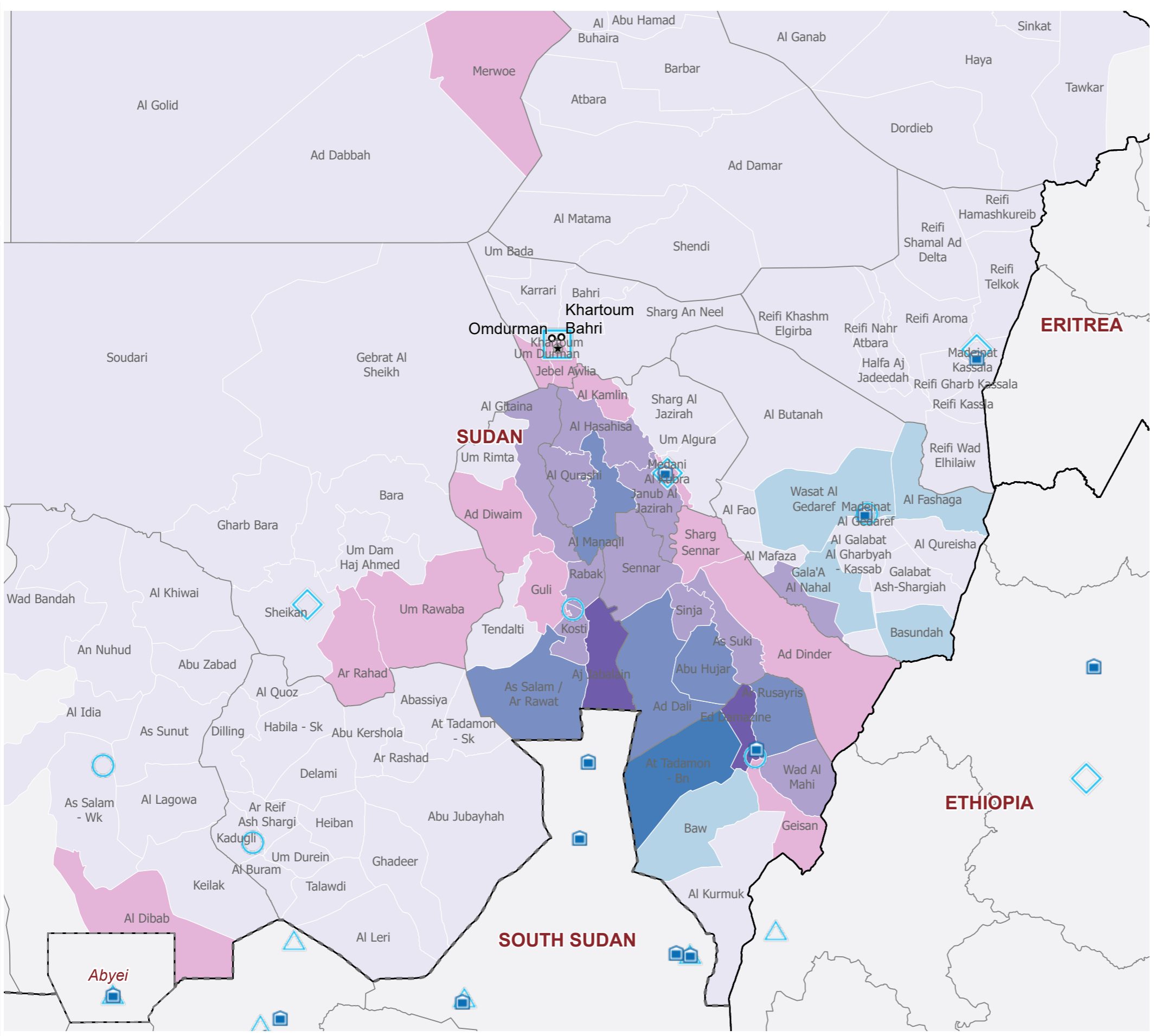
The designations employed and the presentation of material in the map(s) do not imply the expression of any opinion on the part of WFP concerning the legal or constitutional status of any country, territory, city or sea, or concerning the delimitation of its frontiers or boundaries.

**Data sources:** WFP offices; WFP - Boundaries; UN Map, WFP - Roads; ©OpenStreetMap Contributors - Populated places; GeoNames - Accumulated rainfall; GPM - Weather forecast; ECMWF - Flood Detection; NOAA-VIIRS, MODIS NRT, ESA Sentinel 1 - IDP/Refugee Locations; UNHCR - Terrain; ESRI - Surface Water/Seasonality; JRC - Cropland Mask; NASA GFSAD30 - Population; WorldPop / GHSL - Maximum Flood Extent; NASA MODIS/DFO and C2S

Date Created: 19 Aug 2024 - Contact: wfp.adam@wfp.org

Country Office	River	<b>*Satellite Observed Water Extent</b>	Refugee, formal accommodation in settlement	Refugee, individual accommodation in communities	IDP, collective centre
Field Office	Road	Historical Maximum Flood Extent MODIS 2000 - 2018 Source: DFO and Cloud2Street	Refugee, informal settlement	Refugee, unknown	IDP, individual accommodation in communities
Sub Office	International Boundary		Refugee, spontaneous location	IDP, formal settlement	IDP, informal settlement
Warehouse	Administrative Boundary 1		Refugee, centre	IDP, spontaneous location	IDP, unknown
National Capital	Special boundary line; Armistice, undetermined or administrative line; Autonomous region boundary; Other; Sovereign base limit		Refugee, collective centre	IDP, centre	
Major City	Permanent Water Bodies				
City	Dam / Reservoir				

*\*Data displays the maximum combined NOAA VIIRS and Floodscan flood extent detection on the date specified on the map*



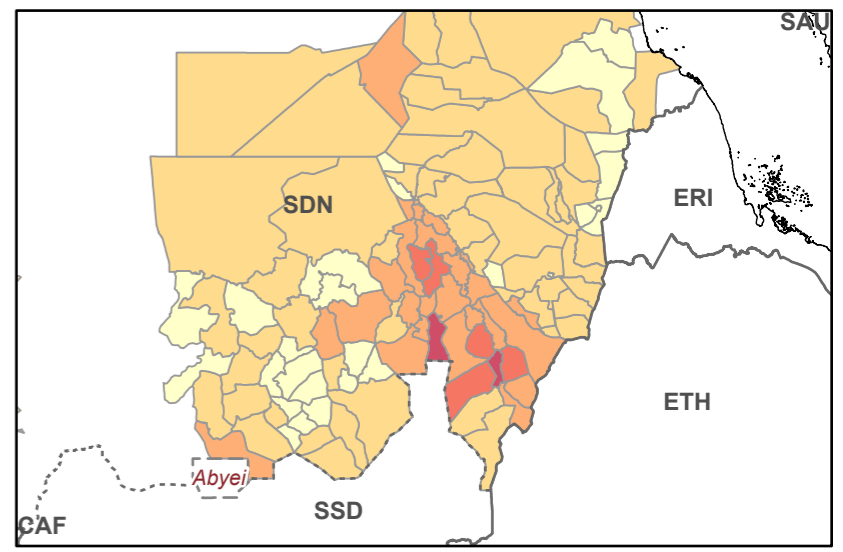
**Flood Impact Data Aggregation**

Derived data are summarized by administrative unit II (admin2). For any boundary related concerns, please write to [wfp.adam@wfp.org](mailto:wfp.adam@wfp.org). This aggregated information is indicative and for planning purposes only.

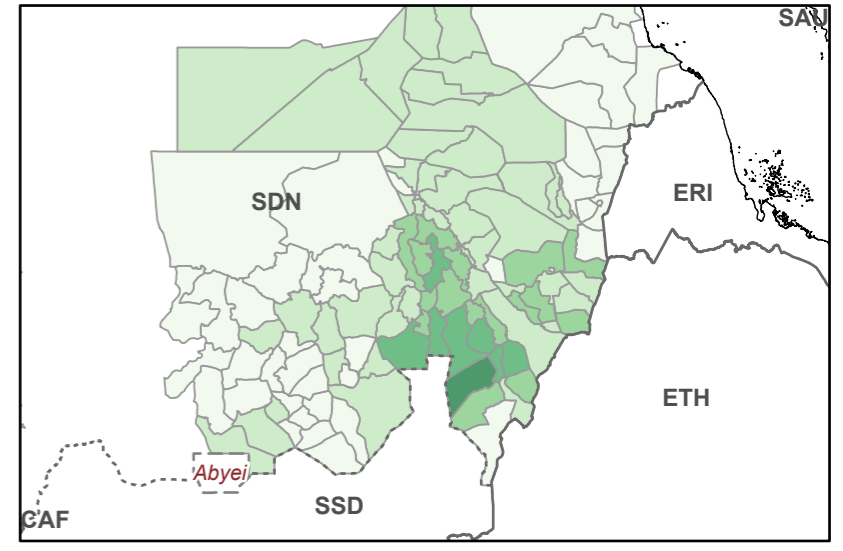
Global Data Sources:  
Population - WorldPop 2022  
Cropland Areas - NASA GFSAD30



**Estimated population living within the flooded area (Admin Unit II)**



**Estimated crop lands within the flooded area (Admin Unit II)**



**ADAM**

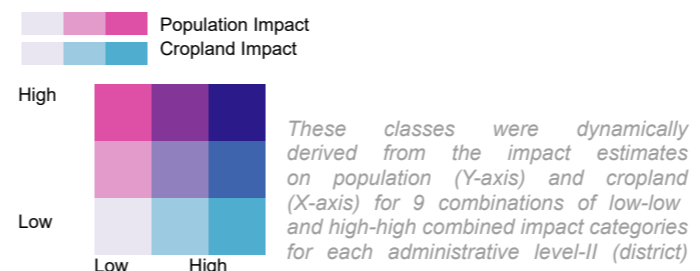
Advanced Disaster Analysis and Mapping

- Country Office
- Field Office
- Sub Office
- Warehouse
- National Capital
- Major City
- City

- International Boundary
- Administrative Boundary 1
- Special boundary line; Armistice, undetermined or administrative line; Autonomous region boundary; Other; Sovereign base limit

Potentially impacted population	Estimated flooded cropland (has)
0 - 1K	0 - 1K
1K - 10K	1K - 10K
10K - 20K	10K - 50K
20K - 50K	50K - 100K
>50K	>100K

**Bi-variate color classification (Main Map Frame)**



The designations employed and the presentation of material in the map(s) do not imply the expression of any opinion on the part of WFP concerning the legal or constitutional status of any country, territory, city or sea, or concerning the delimitation of its frontiers or boundaries.

Data sources: WFP offices; WFP - Boundaries: UN Map, WFP - Roads: ©OpenStreetMap Contributors - Populated places: GeoNames - Accumulated rainfall: GPM - Weather forecast: ECMWF

Date Created: 19 Aug 2024 - Contact: [hq.gis@wfp.org](mailto:hq.gis@wfp.org)  
Map Reference: TCD\_FL\_Aggregation\_20240819\_00

# Sudan Flooding

## Rapid Flood Impact Analysis Breakdown

*\*estimated number of people living in the flooded areas with at least 100 people potentially affected per district. Vulnerable population within flooded area are estimates from WorldPop data.*

(Admin unit 1) Region	(Admin unit 2) District	Flooded Area (hectares)	Flooded Cropland (hectares)	Potentially Impacted Population*		
				Total in District	Children (0-9 y.o.)	Elderly (>60 y.o.)
Aj Jazirah	Al Hasahisa	3,117	2,901	5,714	388	1,429
	Al Kamlin	473	582	1,756	117	425
	Al Manaqil	20,470	18,440	18,581	1,159	5,304
	Al Qurashi	10,358	9,937	14,646	914	4,181
	Janub Al Jazirah	6,468	6,353	7,979	593	1,900
	Medani Al Kubra	207	154	3,037	200	655
	Sharg Al Jazirah	106	99	432	30	121
	Um Algura	392	392	316	17	94
	Blue Nile	Ar Rusayris	43,947	17,395	19,949	915
At Tadamon - Bn	Baw	94,272	83,631	10,703	584	3,343
	Ed Damazine	3,474	1,590	645	37	232
	Geisan	68,985	48,173	47,848	2,406	14,386
	Wad Al Mahi	984	110	1,100	61	380
	Central Darfur	Azum	7,767	1,792	2,366	109
Gedaref	Bendasi	654	12	182	9	59
	Wadi Salih	4,726	578	3,126	151	1,052
	Al Fashaga	655	121	180	9	61
Kassala	Al Mafaza	2,834	2,766	956	53	299
	Ar Rahad	770	641	425	23	152
	Basundah	2,460	1,496	1,355	73	485
	Gala'A Al Nahal	1,384	1,009	117	7	41
	Wasat Al Gedaref	3,711	3,429	540	39	176
Reifi Khashm Elgirba	Halfa Aj Jadeedah	2,601	2,616	198	12	56
	Reifi Khashm Elgirba	283	282	308	20	74
		1,295	104	438	24	115

	Reifi Nahr Atbara	1,294	174	500	32	138
Khartoum	Bahri	12	29	332	20	70
	Jebel Awlia	81	34	1,263	62	290
	Karrari	28	20	380	22	84
	Khartoum	27	47	2,530	175	425
	Sharg An Neel	13	31	171	9	40
North Darfur	Um Durman	54	118	1,827	121	379
	As Serief	1,845	195	605	37	175
	At Tina	2,861	0	344	17	105
	Kernoi	10,570	0	1,070	66	283
North Kordofan	Saraf Omra	472	218	1,131	44	322
	Ar Rahad	8,342	144	5,522	361	1,814
	Gebrat Al Sheikh	3,495	0	142	7	44
	Gharb Bara	4,766	0	996	68	331
	Sheikan	885	41	387	24	106
	Soudari	4,085	0	274	18	81
	Um Rawaba	5,988	193	4,829	315	1,587
Northern	Ad Dabbah	705	365	257	19	62
	Al Golid	1,370	660	229	18	47
	Merwoe	1,465	925	1,063	93	236
River Nile	Abu Hamad	3,686	459	457	31	109
	Ad Damar	5,261	303	582	37	154
	Al Buhaira	621	44	129	9	31
	Al Matama	107	123	184	16	43
	Atbara	53	40	158	12	32
	Barbar	1,144	280	390	37	84
	Shendi	751	271	338	25	77
Sennar	Abu Hujar	84,505	49,384	19,397	1,333	5,374
	Ad Dali	29,653	24,612	1,954	115	569
	Ad Dinder	13,437	259	1,130	57	384
	As Suki	1,638	1,189	2,257	129	665
	Sennar	6,848	6,342	3,372	212	892
	Sharg Sennar	987	981	1,442	97	422

	Sinja	3,152	2,435	2,201	144	591
South Darfur	Rehaid Albirdi	168	0	132	6	45
South Kordofan	Abu Jubayhah	2,470	687	180	9	60
	Ghadeer	3,861	0	155	9	52
West Darfur	Ag Geneina	547	56	1,639	91	516
	Beida	422	0	157	9	55
	Foro Baranga	2,217	690	1,729	98	587
	Habila - Wd	2,060	475	1,232	70	418
	Kereneik	1,492	122	404	26	143
	Kulbus	850	0	199	8	50
West Kordofan	Abu Zabad	505	25	615	38	201
	Al Dibab	10,625	11	1,709	78	572
	Al Lagowa	1,467	0	270	16	97
	As Sunut	1,627	0	360	21	129
	Keilak	3,060	36	382	17	133
White Nile	Ad Diwaim	712	444	1,535	95	441
	Aj Jabalain	61,109	14,012	27,563	1,068	8,021
	Al Gitaina	12,589	3,126	6,726	416	1,898
	As Salam / Ar Rawat	40,782	15,257	4,994	301	1,556
	Guli	790	158	1,164	73	317
	Kosti	6,107	3,420	6,878	430	1,875
	Rabak	3,540	1,003	6,288	401	1,712
	Tendalti	1,592	333	454	31	141
	Um Rimta	486	309	235	14	61

# Learn more about ADAM



[wfp.adam@wfp.org](mailto:wfp.adam@wfp.org)



[gis.wfp.org/adam/](https://gis.wfp.org/adam/)



[@WFP\\_ADAM](https://twitter.com/WFP_ADAM)

